

# ***Applications Round-up with the AnaJet Direct-to-Garment Printer***

Hosted by AnaJet Applications Manager,  
Paul Green

**The presentation will begin shortly...**

Applications Round-up for the AnaJet Direct-to-Garment Printer

# AnaJet Applications Round-up

- Before we begin please make sure you have your speakers on and turned up, if you do not have speakers please plug in head phones.
- Please keep all questions until the Q&A section later in the presentation.
- Please do not use the chat input area for your questions. Use the Q&A box located in the bottom right corner.
- Please keep all questions related to the topics being covered.
- At the end of the webinar you will receive a survey, please take a moment to fill it out and let us know how we did and what other topics you would like to see.



Applications Round-up for the AnaJet Direct-to-Garment Printer

# AnaJet Applications

AnaJet is the only direct-to-garment printer with a dedicated department to new printer applications and products. These new applications are key elements to help you make more profits from your printer and offer your customers more than the average garment printer. The three main AnaJet applications are Art Print, Metal Foil and Extended Media. We will review each one of them and give you the inside on how they work.

**Metal Foil**



**Art Print Canvas Prints**



**Extended Media**



### Applications Round-up for the AnaJet Direct-to-Garment Printer

**AnaJet**  
**ARTprint**  
CUSTOM CANVAS PRINTING



Applications Round-up for the AnaJet Direct-to-Garment Printer

# AnaJet ARTprint Canvas Printing

With AnaJet Apparel Printers you can now reproduce Fine Arts, Graphic Prints and photos on canvas with stunning results. Print onto ARTprint canvas and coat the final image with AnaJet's Texture Coat to create the look and feel of an oil painting.

This is a very simple process and AnaJet provides a kit with all the supplies needed before the print is placed into the frame of your choice. All the products like Canvas and Texture Coatings are also available separately.



Applications Round-up for the AnaJet Direct-to-Garment Printer

# How to, Step 1: Printing on Canvas



**AnaJet ARTprint canvas is a special ink jet coated canvas. Regular canvas will not work as well and will bleed quite easily.**

- Use the AnaJet ARTprint Table Height Gauge Block (black) to set the correct table height. The table must be raised slightly for canvas printing.
- Place 4 small pieces of tape in each corner to help keep the canvas from moving on the table and place the canvas on the print table with hoop removed.
- Make sure that the graphic you are going to print has around 1/16" bleed to the frame size or backing board you are going to use.
- Take your time when printing, start off light and built up your print. You can always go darker by doing an additional print pass. If you print too much ink and the image is too dark you can never go back.
- Depending on the print size you may be able to fit 2 prints onto 1 sheet of canvas

Applications Round-up for the AnaJet Direct-to-Garment Printer

# How To, Step 1: Printing on Canvas

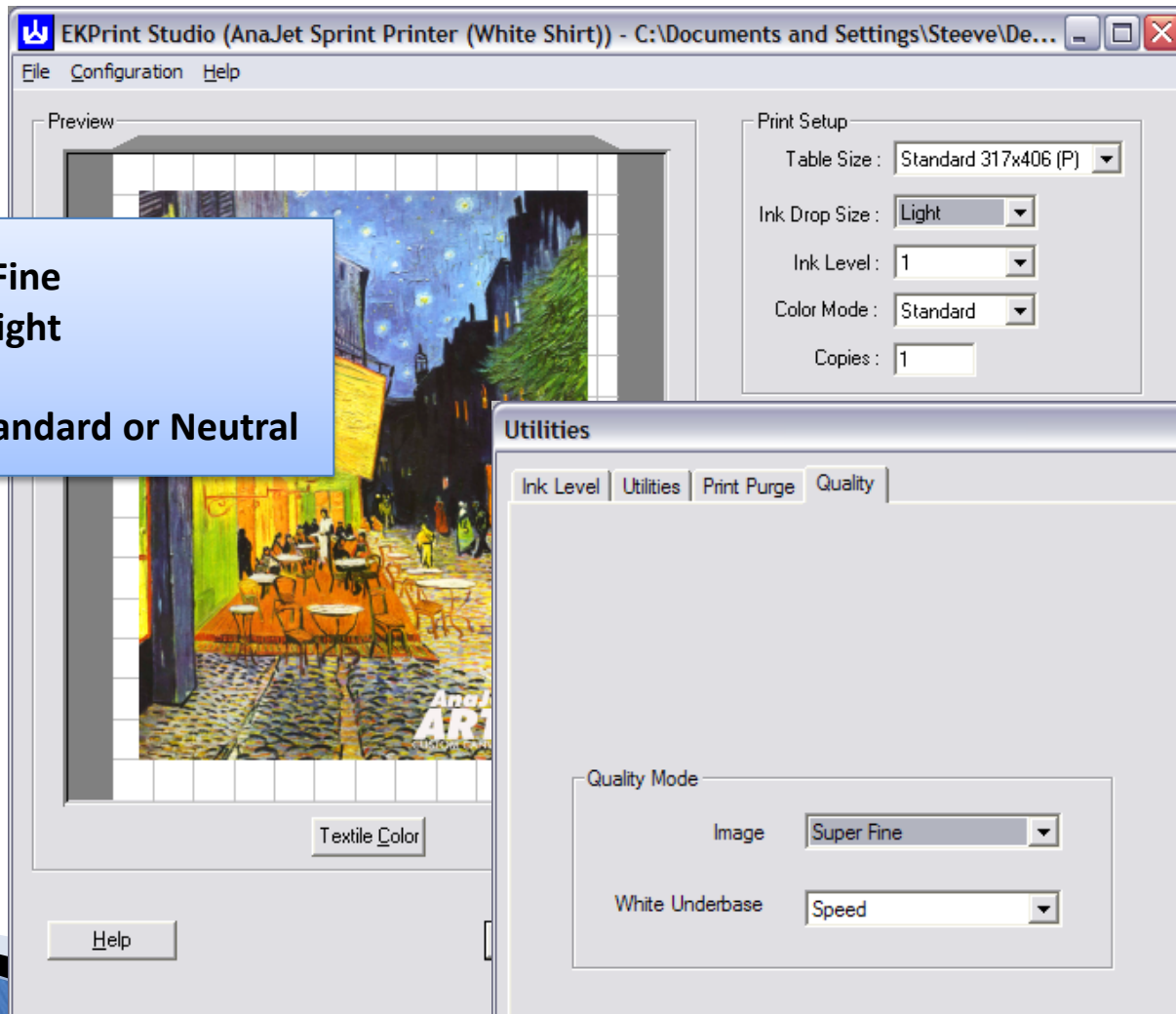


Applications Round-up for the AnaJet Direct-to-Garment Printer

# How To, Step 1: Printing on Canvas

## Settings in EK Print Studio

- Quality: Super Fine
- Ink Drop Size: Light
- Ink Level: 1
- Color Mode: Standard or Neutral



Applications Round-up for the AnaJet Direct-to-Garment Printer

# How To, Step 1: Printing on Canvas

- Print your image onto the canvas



- Hover the heat press for 20 seconds above print  
( hovering to long may warp canvas)



Applications Round-up for the AnaJet Direct-to-Garment Printer

# How To, Step 2: Coating

- Depending on your graphic you will want to use matte texture coating or semi gloss texture coating.
- Use a roller to create a smooth finish.
- Use a brush along with a dabbing technique to create a texture finish. You may also use the brush and make brush strokes, zig zags and twists. This will give your print an original oil printing look and texture.
- Let the coating dry, if you would like more of a texture to your finish add a second coat.



Applications Round-up for the AnaJet Direct-to-Garment Printer

## How to, Step 3: Mounting Canvas

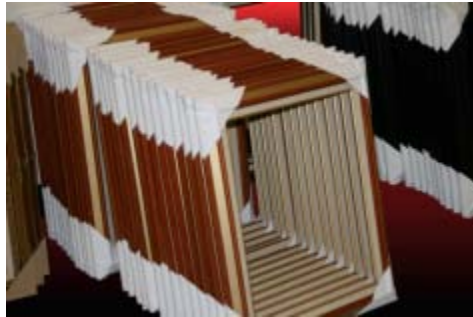
- Position your backing board on the back of the canvas.
- Once the board is in the right position draw around it to give yourself a template.
- Spray the backing board with an adhesive glue and then place down onto the canvas inside the box drawn around the board earlier.
- Press down firmly and then flip the print over to make sure it is nice and flat with no air pockets.
- Cut the out side edges of canvas using a new sharp Exato blade or box cutter. Take your time and always cut away from yourself.



Applications Round-up for the AnaJet Direct-to-Garment Printer

## How to, Step 4: Frame

You can now place your ARTprint into a frame for your final product. Simply place the canvas into an open frame or to give a larger appearance you can use a matt board. Standard open frame sizes are 8"x10", 8 ½"x11" and 11"x14". The print can also be supplied to your customer without a frame so it can be framed by them in a frame they want to use.



Applications Round-up for the AnaJet Direct-to-Garment Printer

### AnaJet ARTprint Starter Package



The ARTprint starter package comes with everything you need but the frame. Includes: Texture coatings, brushes, rollers and tray, spray adhesive, backing boards, canvas, graphics, how to information and the ARTprint table height gauge. All products are also ready for individual purchase.

For pricing and more info visit our on-line store at

AnaJet.com 13

Applications Round-up for the AnaJet Direct-to-Garment Printer

## Metal Foil Printing in Review



Applications Round-up for the AnaJet Direct-to-Garment Printer

## Metal Foil Printing in Review

The process of metal foil printing is now another way to decorate your garment with Direct-to-Garment printers. The process is quite simple and not much different than printing a dark garment. Metal foil can be purchased from most any screen printing suppliers and is relatively inexpensive. The following steps will provide you with a fantastic looking and wash-fast print. The same process is used for both light and dark garments.

The final cost of a foil print is less than a full color print of the same size. The retail price of a garment with foil is \$10.00 to \$15.00 more. Now that's a profit!



Applications Round-up for the AnaJet Direct-to-Garment Printer

# Metal Foil Process



- Foil always requires a pretreated garment and white ink even on white garments.
- Print your graphic in a color close to the same color as the metal foil being used.
- Print a light white ink base (Med 1) and a heavy color pass (Heavy 3-4)
- Once printed take your garment to the heat press right away.

Applications Round-up for the AnaJet Direct-to-Garment Printer

## Metal Foil Process



- Place your garment on the heat press
- Place a sheet of pre-cut foil on top of your print with the shiny metal foil side up.
- Cover with parchment paper and clamp your press down using a little more pressure than used for regular garment printing.
- Use the same heat press settings you use for dark garments 330° for 90 seconds.

Applications Round-up for the AnaJet Direct-to-Garment Printer

## Metal Foil Process



- Once your heat press is finished let the garment cool down to the touch with the foil still in place.
- Grab two corners of the foil and peel back slowly and evenly.
- The foil will only stick to the garment in places that ink was printed.
- If any extra foil is left on the shirt it can be rubbed off with a towel or old shirt.

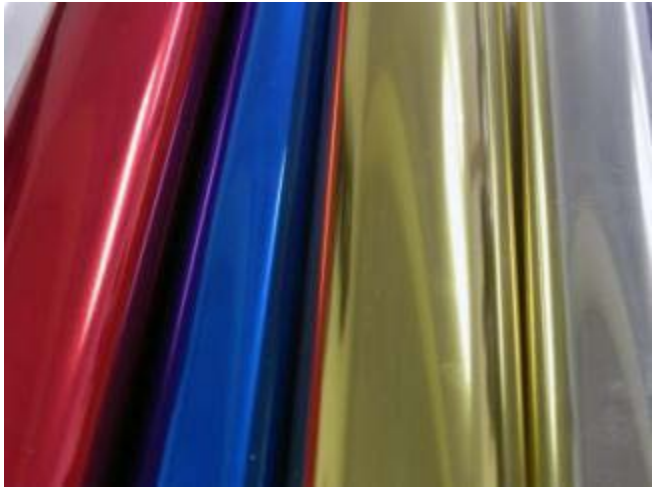
Applications Round-up for the AnaJet Direct-to-Garment Printer

**You now have a Metal Foil print ready for sale**



Applications Round-up for the AnaJet Direct-to-Garment Printer

## AnaJet now offers Metal Foil and Starter Kits!



AnaJet METALfoil is a specially designed foil for direct-to-garment printers. This foil is only available from AnaJet.

Colors available currently are: Gold, Silver, Red and Blue.



AnaJet also offers the FOILprint starter package. This comes with: 4 colors of foil, starter CD with instructions and graphics, samples of printed foil shirts.

**For pricing and more info visit our on-line store at [AnaJet.com](http://AnaJet.com)**

Applications Round-up for the AnaJet Direct-to-Garment Printer

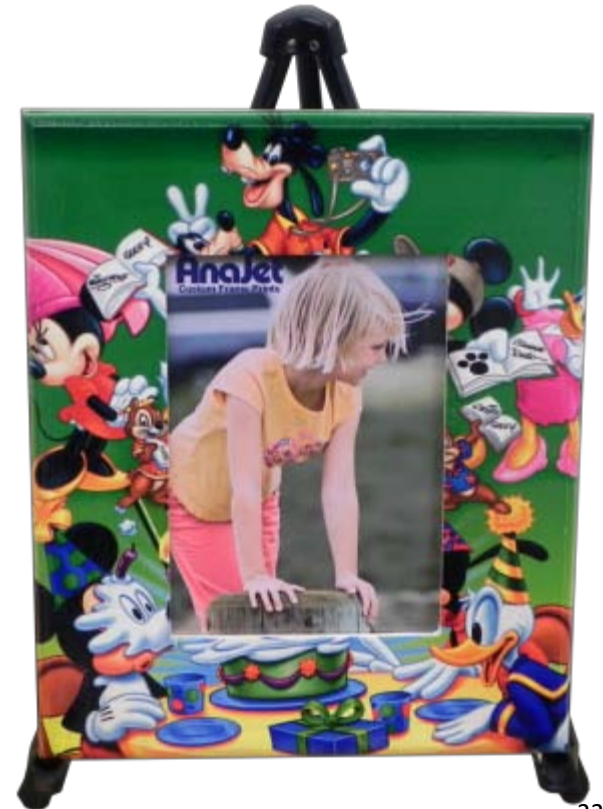
AnaJet Extended Media Package in Review



### Applications Round-up for the AnaJet Direct-to-Garment Printer

## AnaJet Extended Media Package in Review

AnaJet is happy to bring you the latest in new applications for your direct-to-garment printer, Extended Media! This application now allows you to print on surfaces like wood, glass, metal and many other items. The AnaJet Extended media package includes everything you will need to begin printing, giving you more products to offer your customer.



## Applications Round-up for the AnaJet Direct-to-Garment Printer

### How it works

Printing onto surfaces like wood, glass and metal is actually a very simple process. The main key to this application is an ink jet receptive coating that is applied to the surface before printing. The coating is available in clear and a matte white finish.

When the coating has dried you can print your graphic onto the desired surface. Keep in mind that whatever you print on needs to fit under the printhead and is within our printable table area.

Once the print is complete we need to make sure it is protected. A UV clear coat is then applied over the print with an aerosol spray. This will protect the print from the sun, rubbing off, water and also add a gloss finish.

Here is an example, this is a wooden clock we made. The round wooden surface was coated with matte white coating and then printed with the AnaJet. After the clear finish dried we added the clock hands and numbers. All of the items we used can be found at local craft stores



### Applications Round-up for the AnaJet Direct-to-Garment Printer

## Extended Media Process



The first step in Extended Media printing is to coat the surface you will be printing on with AnaJet's Extended Media Ink Jet Receptive Coating. Two coats are recommended for the best results.

The coating is available in clear and a matte white. This all depends on your graphic and the surface you are going to print on, wood, metal or glass.

### Applications Round-up for the AnaJet Direct-to-Garment Printer

## Extended Media Process



Adjust your table head for proper print head clearance before printing.

Print the graphic onto the surface using a light 1-2 ink drop size.

It is a good idea to tape off any areas that you do not want any print or overspray.

### Applications Round-up for the AnaJet Direct-to-Garment Printer

## Extended Media Process



Spray the printed area with a UV protecting solvent clear coating, available from AnaJet.

The first coating should be light and the followed by a second coat for the best results.

Let the coating dry completely.

Applications Round-up for the AnaJet Direct-to-Garment Printer

Your Extended Media Print is now Complete



Applications Round-up for the AnaJet Direct-to-Garment Printer

### Examples of Extended Media Printing



### Applications Round-up for the AnaJet Direct-to-Garment Printer

## Extended Media Products and Starter Kit



**The Extended Media Starter Package includes:**

Matte white and clear AnaJet inkjet receptive coatings, UV protecting clear coat finish, assorted foam applicator brushes, Instructional CD, sample of wood print.

All products are also available individually for sale.



**For pricing and more info visit our on-line store at [AnaJet.com](http://AnaJet.com)**

Applications Round-up for the AnaJet Direct-to-Garment Printer

## AnaJet Webinars

**To watch the past webinars on Extended Media, Foil and other topics please go to [www. AnaJet.com](http://www.AnaJet.com) and click on Events and then Webinars.**

**All application products are now in stock, to order call AnaJet at 1-877-626-2538 or visit our online store [www. AnaJet.com](http://www.AnaJet.com)**

**International users please contact your AnaJet Distributor.**