

Waste Ink Pad Count Reset

Tech Note Number: 501

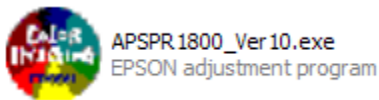
Total number of pages: 3

Date: June 15, 2009

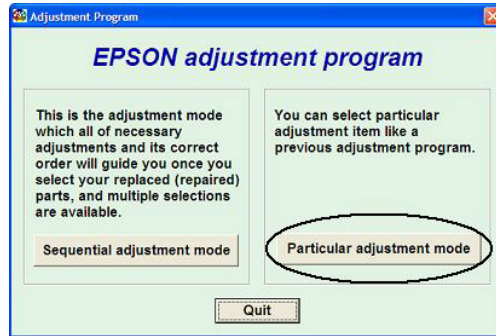
Applicable Models: AnaJet FP-125 printer series

When the print engine waste ink count reaches its maximum value, the waste ink count has to be reset using the Epson print engine Adjustment Program before the printer can be used again. When it is necessary to reset the waste ink count, the printer LCD may give the "ERROR: RESET WASTE INK PAD" message during system initialization. Depending on your printer usage pattern, it may be necessary to reset the counter every few months. The Adjustment Program can be downloaded from www.AnaJet.com. Install the program in the computer you normally use to run the AnaJet printer. This procedure must be performed with the print engine fully turned on with proper USB cabling to the computer. You will know that the print engine is turned on because the LCD will display "ERROR: RESET WASTE INK PAD" and you will hear the printer beeping repeatedly. If this is not displayed you will need to press the power key on the keypad.

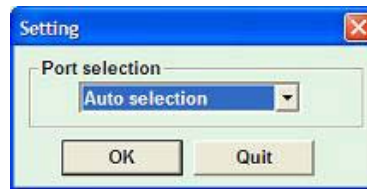
1. Once you have downloaded the Epson Printer Adjustment Program, you will first need to extract it. To extract a zipped file, right click on it and select "Extract" and follow the on screen wizard until it is completed. Once completed, a new folder should appear on your desktop called EpsonADJ; this will be the extracted folder.
2. **If you are running Windows XP skip to step 3; otherwise, follow these instructions.** Open the EpsonADJ folder. Within that folder will be a multicolored icon called APSR_1800_Ver10 (see image below). If this icon does not appear multicolored you will need to extract it again. Right click and select "Properties". A new window will appear: go to the compatibility tab and check the following boxes. First select run this program in compatibility mode for Windows XP service pack 2. Second select run this program as an administrator. Then click OK.



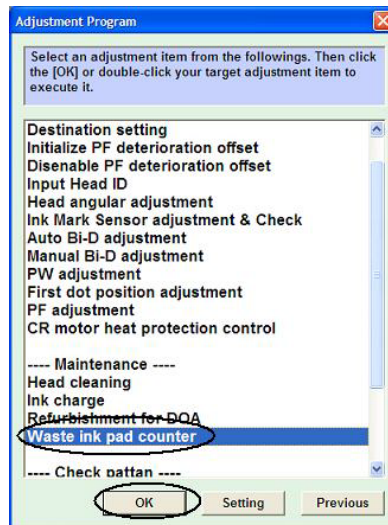
3. Load the Epson Adjustment Program by double left clicking the multicolored icon, and click the Particular Adjustment Mode button. Do not use any functions other than the waste ink pad counter initialization in the program as explained here. **Improper use of some of the features will make your printer unusable. Obtain assistance from your local distributor or AnaJet Tech Support as needed.**



4. In the Port Selection window, choose Auto Selection and click OK.



5. When the menu page appears, select Waste Ink Pad Counter in the Maintenance section of the menu. Click OK.



6. Click the Read button to see the current waste ink counter value. It will be close to the maximum value of 17772 points. Click the Initialization button to reset the value.



7. When you see the following confirmation window, the waste ink counter is reset properly. Click OK, and restart the printer. You will need to power it off from the back with the main power switch.

