

Frozen at System Initializing

Tech Note Number: 512

Total number of pages: 2

Date: May 19, 2009

Applicable Models: AnaJet FP-125 printer series

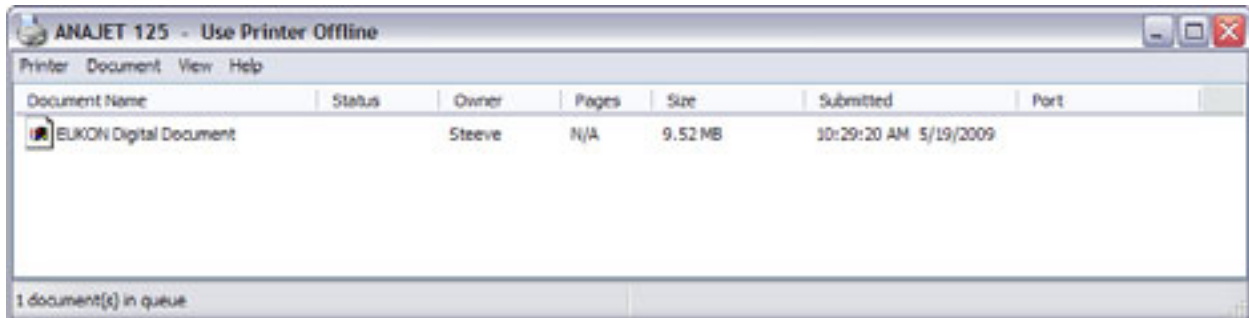
If when starting up the printer and pressing the power button the control panel reads “PLEASE WAIT SYSTEM INITIALIZING” (Fig. 1) and does not go away within 3 minutes and appears to be frozen, this means that you have jobs in the print queue that need to be deleted before the printer can start up.

Fig. 1



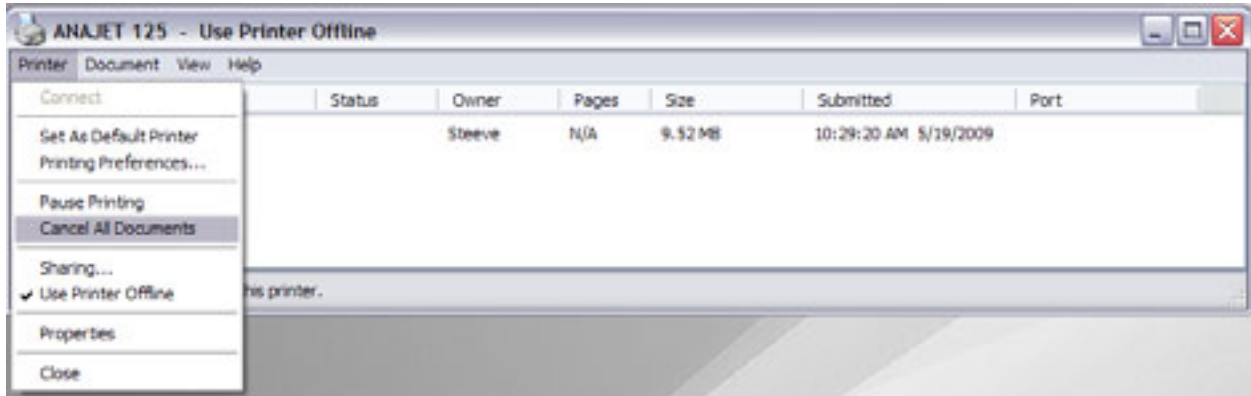
First, power down the printer at the rear power switch then access the print queue by going to the computers Control Panel and then to Printers and Faxes (or just Printers in Windows Vista®). Open the AnaJet 125 print queue by double-clicking the AnaJet 125 icon. The print queue will appear as below. (Fig. 1a)

Fig. 1a



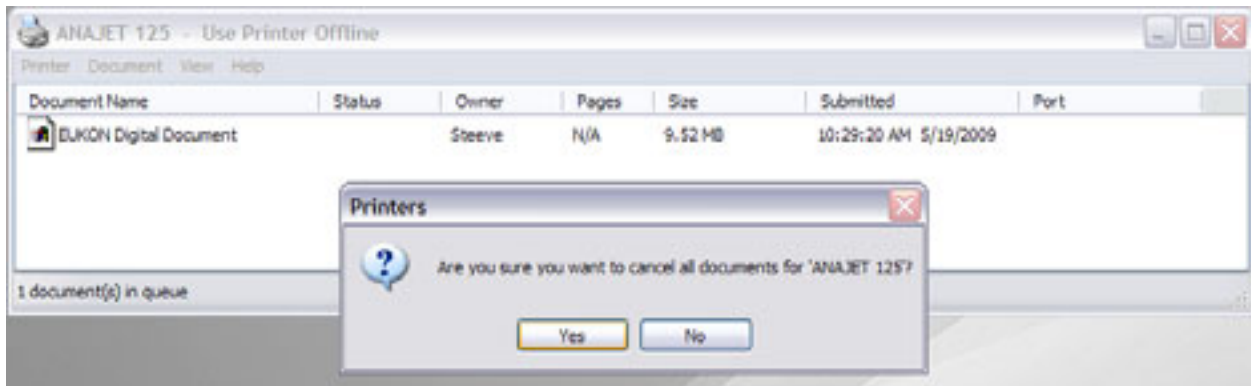
You will see all pending print jobs for the AnaJet. To clear the print queue, select “Printer” and then click “Cancel All Documents”. (Fig. 1b)

Fig. 1b



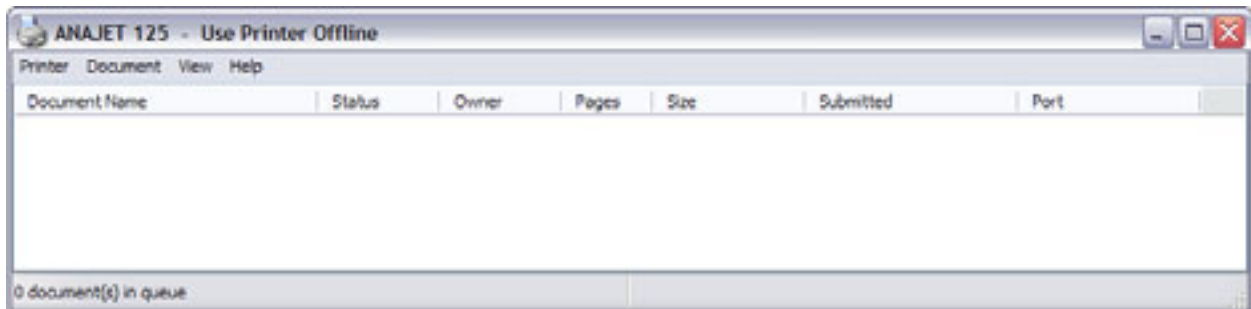
You will then be asked to confirm canceling all documents, click “Yes”. (Fig. 1c)

Fig. 1c



The print queue should now be clear of any pending documents and appear as below. (Fig. 1d)

Fig. 1d



Now power the printer back up by first turning on the rear power switch, followed by pressing the power key on the Control Panel. The printer will now start up normally.