

Performing an ink charge

Tech Note Number: 519

Total number of pages: 3

Date: 4/30/2009

Applicable Models: AnaJet FP-125 printer series

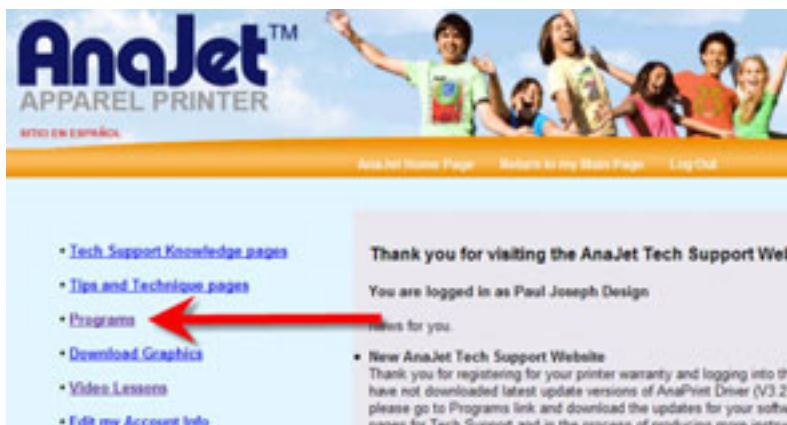
Background: The ink charge is a very powerful utility that allows ink to move very rapidly through the printer. The ink charge is the recommended way of getting ink into the printer for the first time or for flushing the ink out of the printer with cleaning solution. It is also used when the head clean function is unable to clear clogged nozzles.

Note: Section 1 of this paper discusses downloading the utility. If you already have this utility, move on to Section 2.

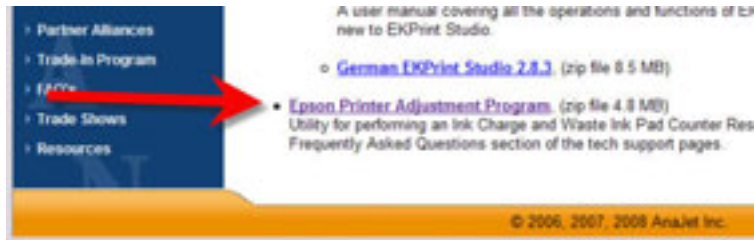
Discussion:

Section 1: The ink charge is located in the Epson Adjustment Utility which can be downloaded from the AnaJet's technical support website. <http://www.anajet.com/ts/login.php>

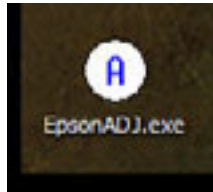
Once registered and logged in, click the link at the left called programs.



From there, scroll to the bottom of the web page and click the "Epson Printer Adjustment Program" link. Save the self-extracting file to your desktop.



Once saved to your desktop, double click the icon to extract the compressed file.



This will create a new folder to run the program from

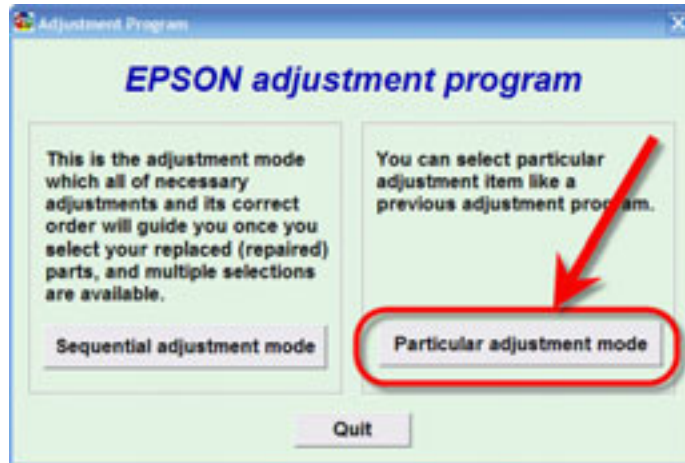
Section 2: Running the program.

Note: if you are using Windows Vista, please refer to the technical note on running Epson Adjust in Windows Vista. There is a special one-time set-up for Windows Vista Users

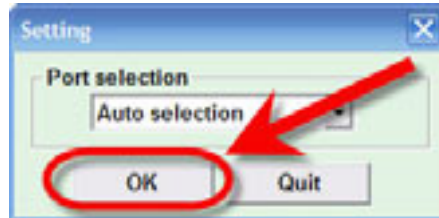
Open the newly created folder called "Adjust". Inside the folder look for the color wheel icon. Double click this icon to launch the program.



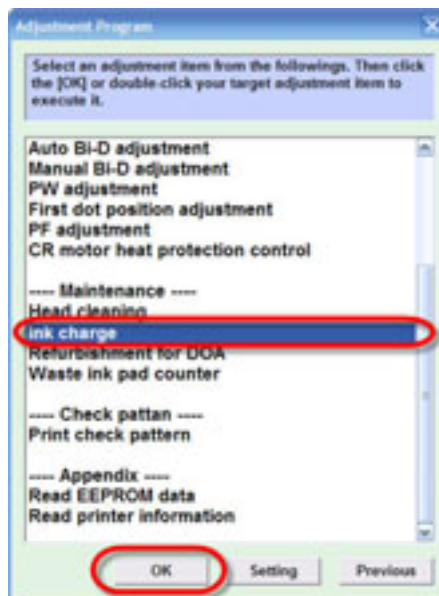
In the program window that opens, click the "Particular Adjustment Mode" button.



Leave the menu on "Auto-Selection" and click "OK"



In the main menu, scroll down to maintenance section. Highlight "Ink Charge" and click "OK".



From the ink charge menu, click the ink charge button to start the ink charge. A progress bar will appear. Once done, you have the ability to print a nozzle check from the ink charge window.



Note: If you are filling your printer with ink for the first time, it will take at least three (3) full ink charges before the ink will be all the way through the printer and coming out of the printhead.

Once the ink is through the printhead, you are ready to begin printing.