

AnaJet Driver Update Instructions (Windows VISTA Operating System)

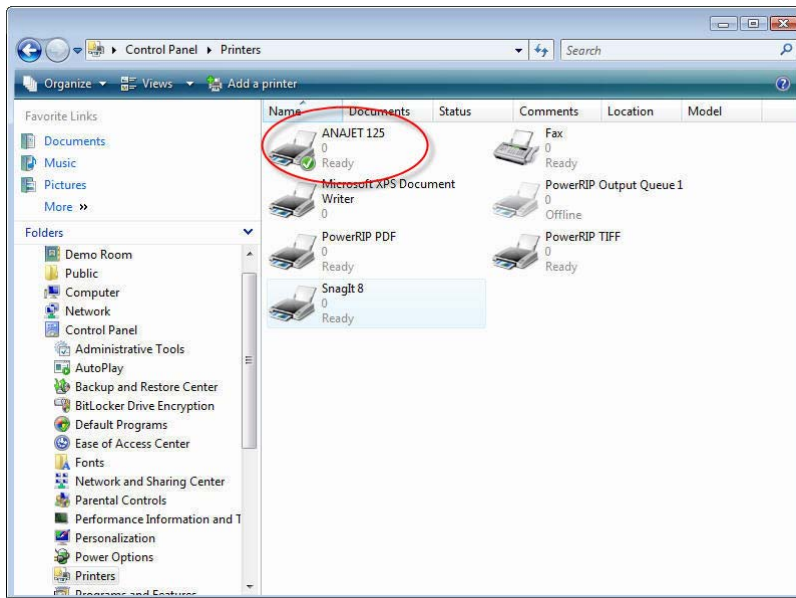
Release Notes For Anaprint Driver Ver. 3.2 - April 15, 2008

A. Download and Extract New Driver

1. Download the new driver
2. Extract the Driver Folder to the desktop

B. Delete Old Driver

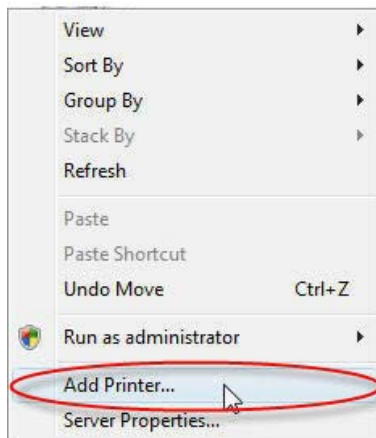
1. Go to Control Panel
2. Double click the **Printers** icon



3. Right click on the ANAJET 125 and select “delete”.

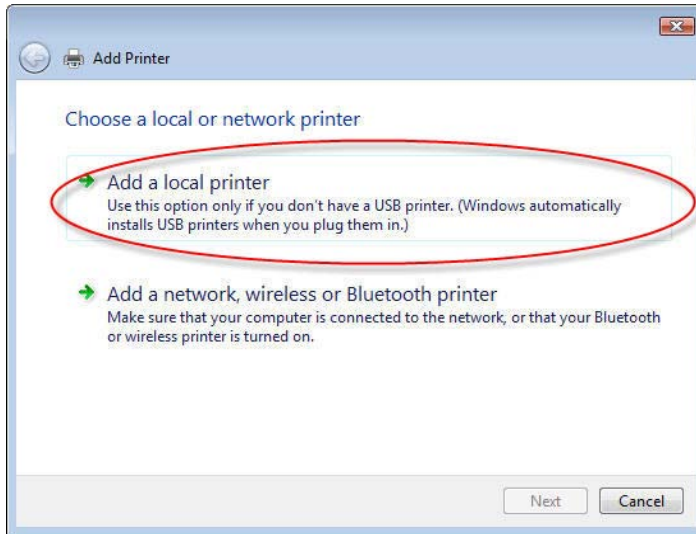
C. Installing New Driver

- 1) Right click a blank space in the window and select “Add Printer”

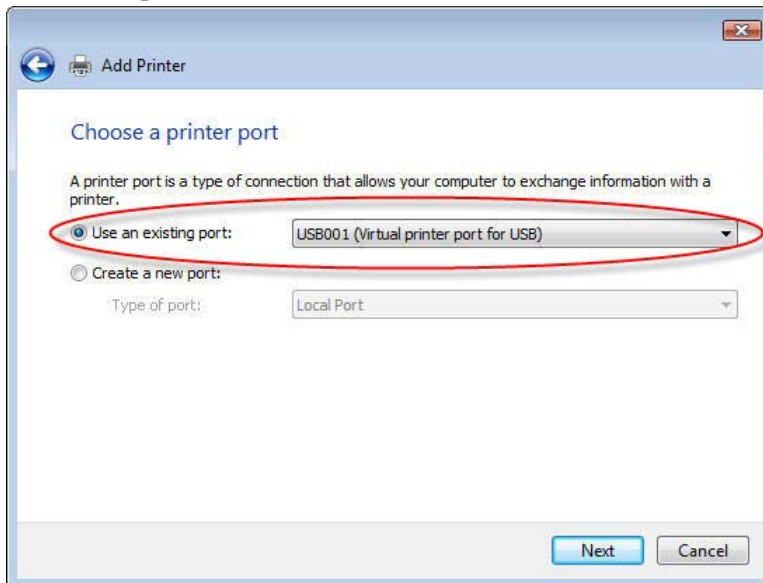


AnaJet Driver Update Instructions (Windows VISTA Operating System)

- 2) When the add printer window opens, select “add a local printer” and click next.

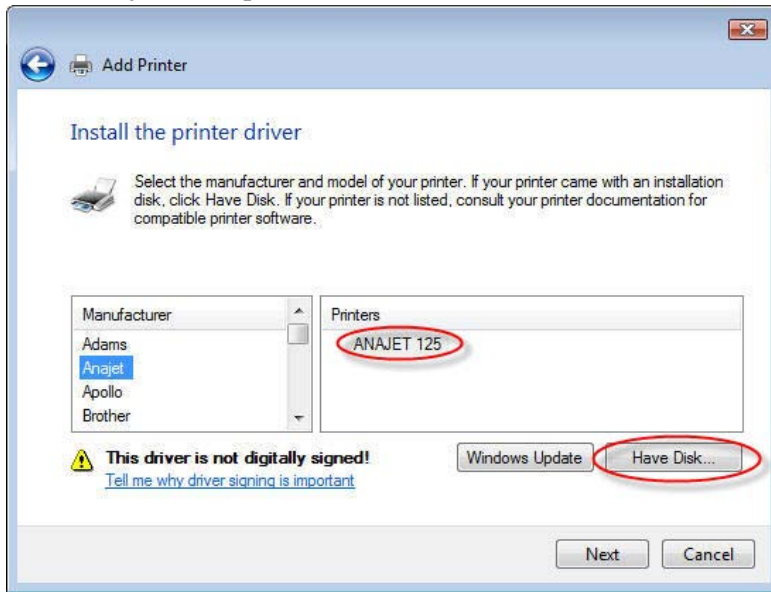


- 3) Click the “use an existing port” radio button. Select the virtual USB port the AnaJet is connected to from the pull down menu. Select next.

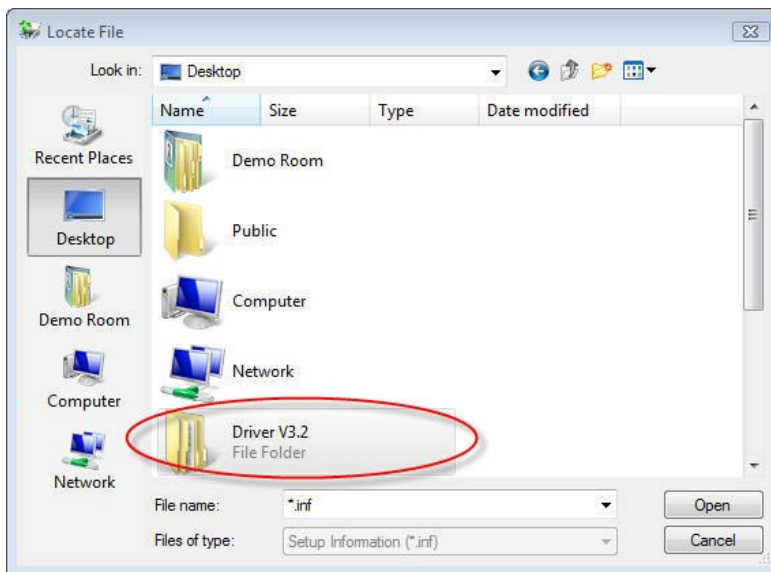


AnaJet Driver Update Instructions (Windows VISTA Operating System)

- 4) Select Anajet as the printer manufacturer. Click the “Have disk” button

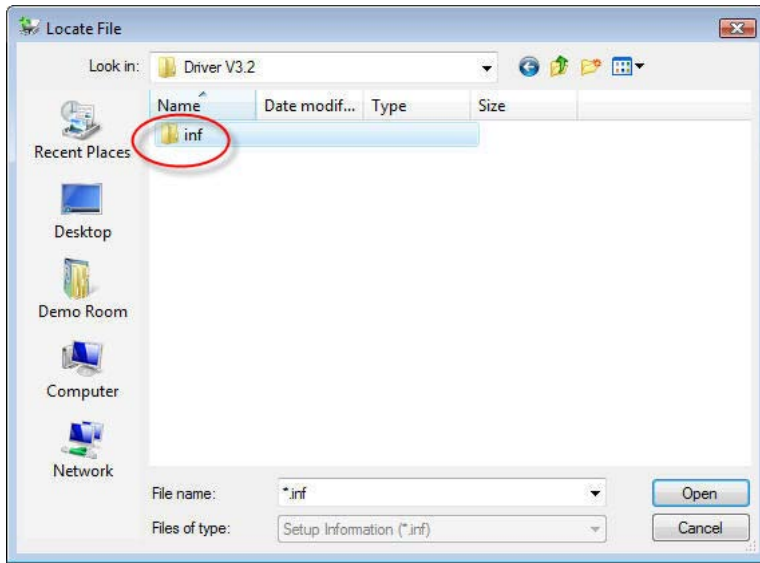


- 5) Browse to the location where you extracted the driver you downloaded from Anajet. Click “open”

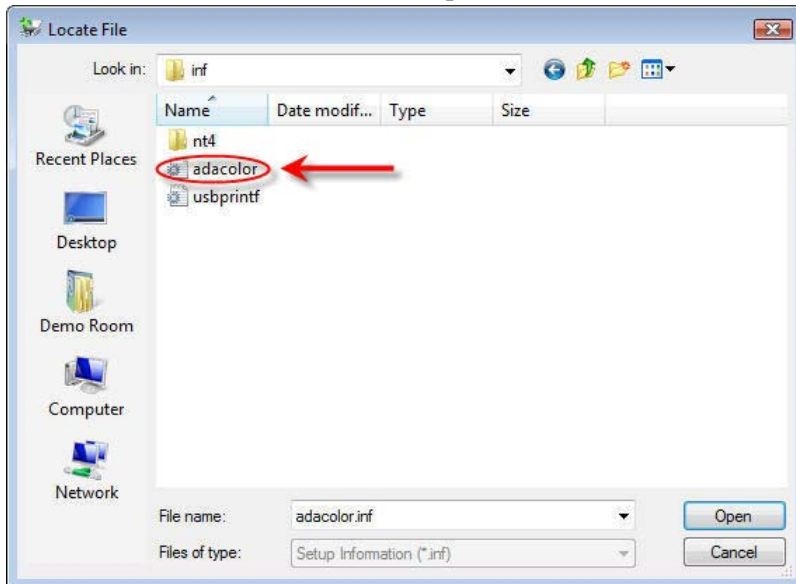


AnaJet Driver Update Instructions (Windows VISTA Operating System)

- 6) Double click the INF folder.

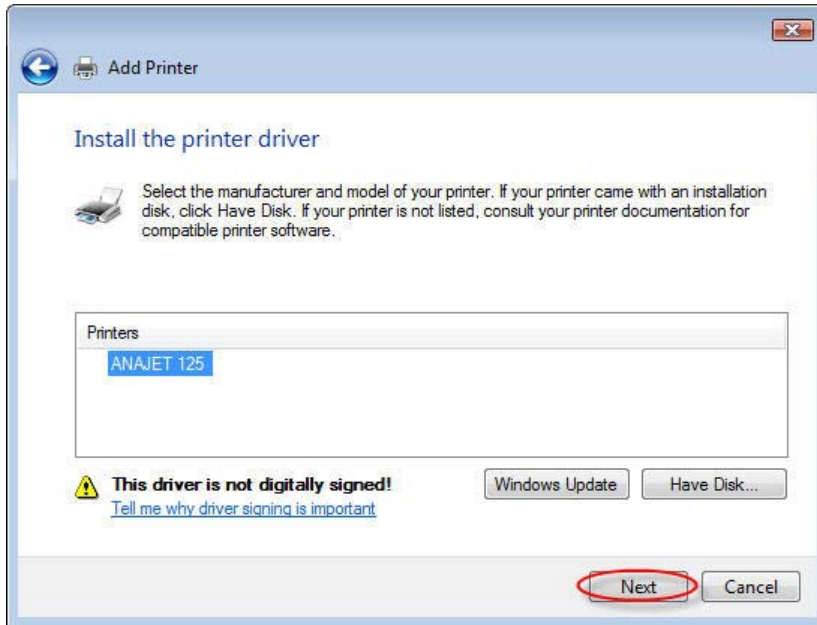


- 7) Select the **“adacolor”** file and click open.

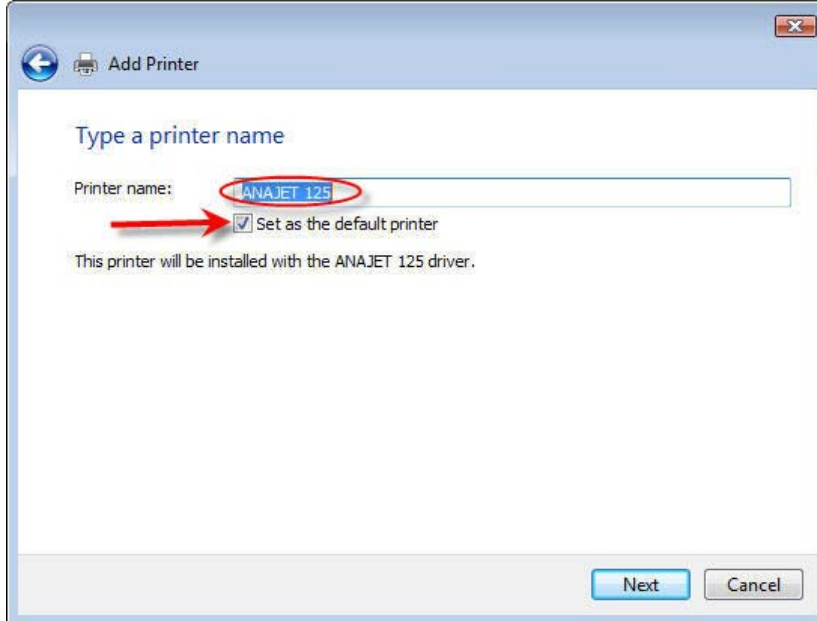


AnaJet Driver Update Instructions (Windows VISTA Operating System)

- 8) Click “Next” on the dialog box

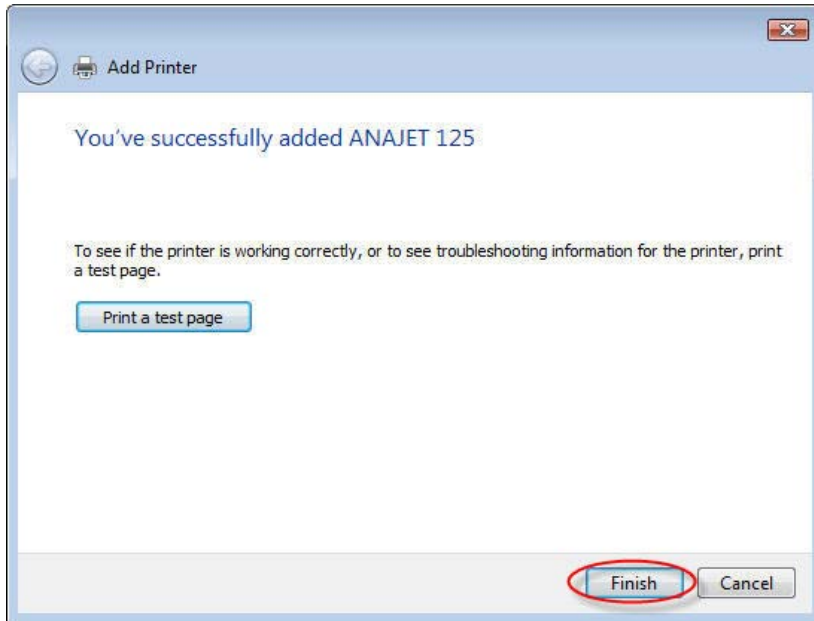


- 9) Enter the printer name as “ANAJET 125”. Click the “set as default printer” check box.



AnaJet Driver Update Instructions (Windows VISTA Operating System)

10) Once the progress bar completes, select finish.



11) Your new AnaJet driver is now installed.