



AnaJet SPRINT Rev. B Software Upgrade

(For Reduced System Auto Maintenance)

February 3, 2010

Dear Customer,

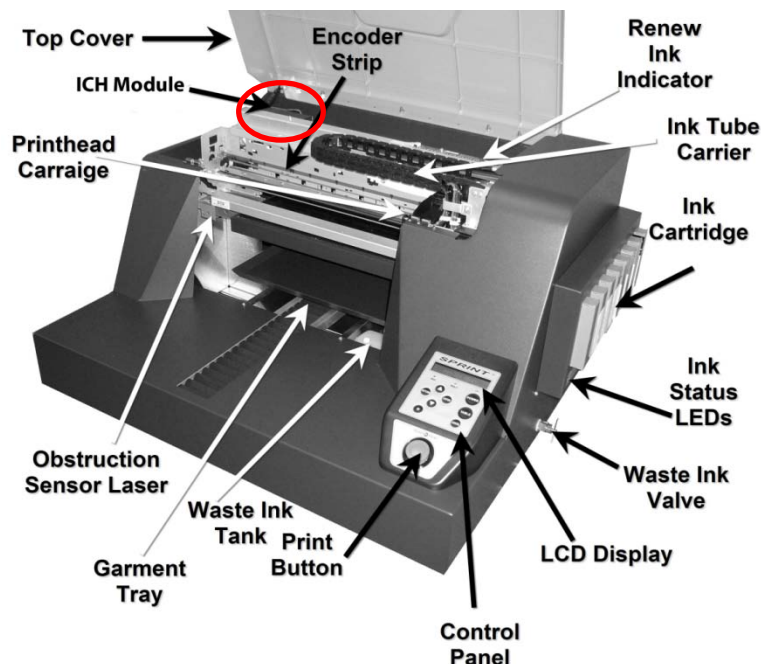
While your printer was in for repairs it was noted that it qualified for a free Rev. B upgrade. The ICH Module has been updated. You must now upgrade your Driver and EKPrint Studio software to complete the upgrade process. All of the necessary software is on the enclosed REV B Driver and Application Files CD. Please follow the instructions below.

What it does:

SPRINT Rev. B reduces the frequency of System Auto Maintenance during printing. It is easy to implement, increases productivity and reduces ink usage. Since Auto System Maintenance is closely tied to ink usage level, it is important that customers use the AnaJet software updates recently released: SPRINT Printer Driver Version 1.2 and EKPrint Studio for SPRINT Version 3.3. The EKPrint Studio v3.3 default setting (content-based white ink) will reduce white ink usage by 46%. SPRINT Upgrade Rev. B will reduce the frequency of Auto System Maintenance by 40%, thus further reducing ink usage and improving operational efficiency. We estimate the efficiency of your SPRINT printer's performance will more than double when you implement both the Rev B Upgrade and EKPrint Studio program update.

Items included in Field Upgrade Rev. B:

- 1 An improved ICH Module (K4xxx)
- 1 AnaJet SPRINT Printer Driver Version 1.2 (on enclosed CD)
- 1 EKPrint Studio for SPRINT Version 3.3 (on enclosed CD)



Upgrade Procedure:

1. Install the new AnaJet SPRINT printer driver (v1.2).

- a. Insert the included AnaJet SPRINT Printer Driver v1.2 disc into the computer.
- b. Browse to the Printers folder on your computer.
 - i. Under Windows XP, go to the Printers and Faxes folder.
 - ii. Under Windows Vista, go to the Printers folder.
 - iii. Under Windows 7, go to the Devices and Printers folder.
- c. Right-click on the **AnaJet Sprint Printer (White Shirt)** printer and choose Properties (for Windows XP and Vista) or Printer Properties (for Windows 7). This will bring up the printer's properties.
- d. Click on the Advanced tab. Then click on the New Driver button (see Figure 4-1) to bring up the Add Printer Driver Wizard. Follow through the Wizard.
- e. When you get to the Printer Driver Selection page (see figure 4-2), do the following:
 - i. Click on the Have Disk button.
 - ii. Then click on Browse.
 - iii. Browse to the **AnaJet SPRINT Printer Driver CD**, then go into the **AnaJet Sprint Driver** folder, then into the **inf** folder.
 - iv. Select the **adacolor.inf** file.
- f. Follow through the rest of the Wizard.

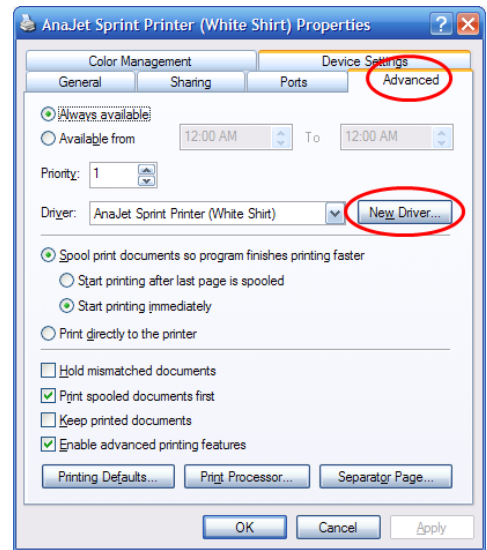


Figure 4-1

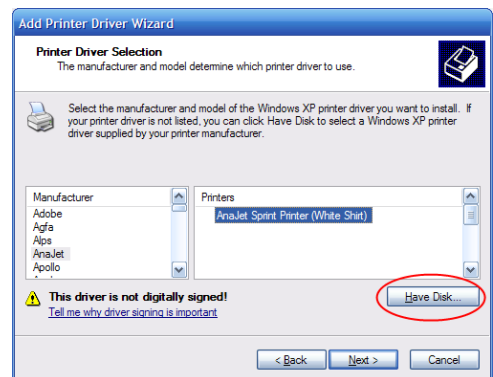
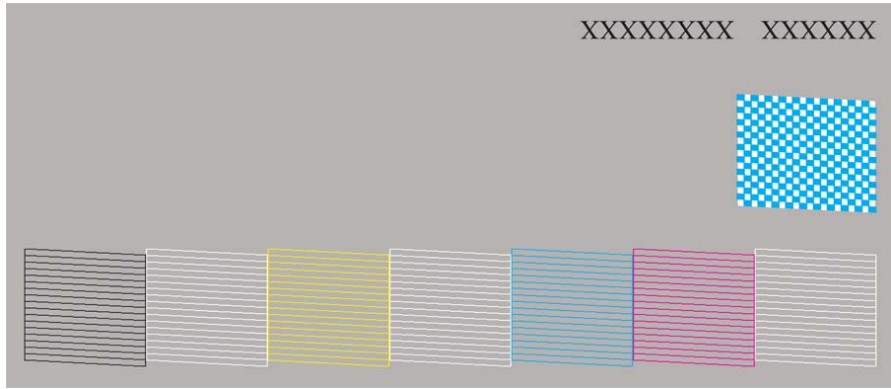


Figure 4-2

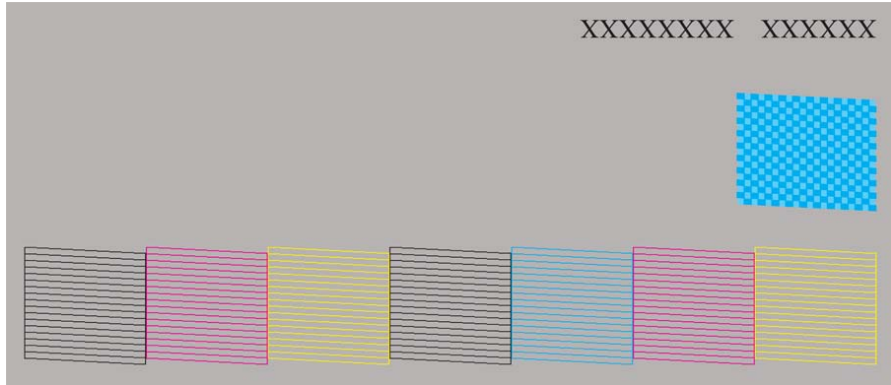
2. Install the new EKPrint Studio for SPRINT (v3.3)

- a. Insert the included EKPrint Studio for SPRINT v3.3 disc into the computer.
- b. The EKPrint Studio for SPRINT startup window will appear.
 - i. If the startup window does not automatically appear, you will need to browse to your computer's CD/DVD drive and double-click on the **setup.exe** file.
- c. Follow through the on-screen instructions to upgrade EKPrint Studio to version 3.3.

After updating the software, reload your printer with ink. Confirm that the printer is now setup using the Rev. B configuration by printing a nozzle check. The nozzle check pattern should now look like the following:



If printer is loaded with color and white ink



If printer is loaded with all color ink