

### Epson Adjust Settings When Using Windows Vista®

Tech Note Number: 511

Total number of pages: 3

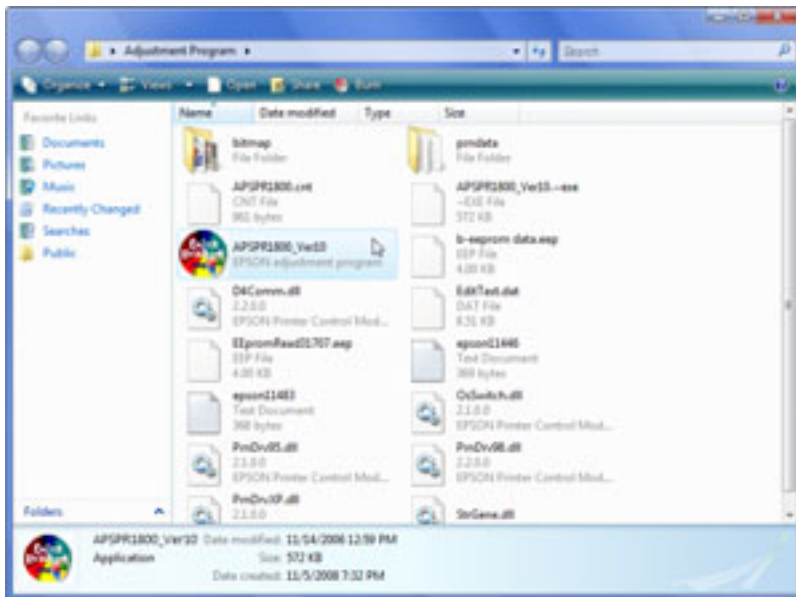
Date: May 19, 2009

**Applicable Models:** AnaJet FP-125 printer series

If your computer is using the Windows Vista® operating system and when you try to use the utilities located in the EPSON Adjustment program nothing happens or you get a communication error you will need to make the following changes to the programs compatibility settings.

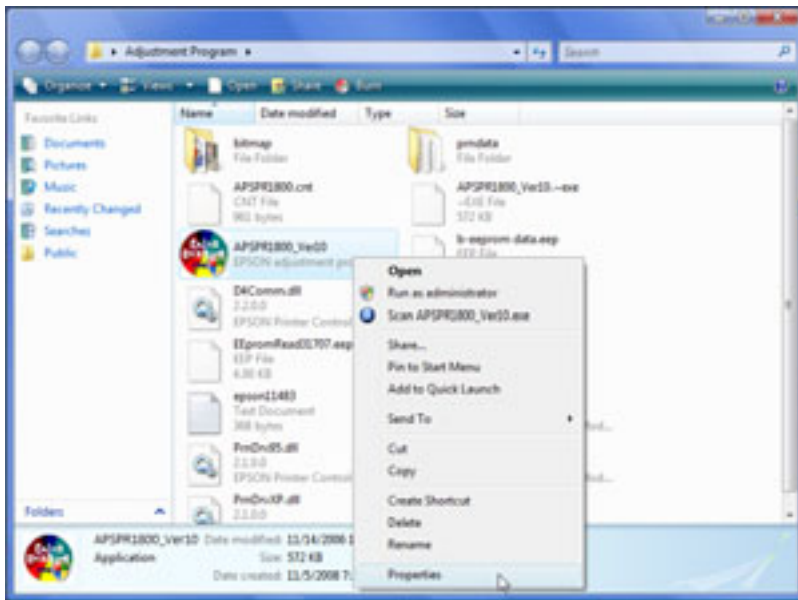
First open the Epson adjustment folder and locate the circular multi-colored icon named APSPR1800\_Ver10.exe. Right click this icon. (Fig 1)

**FIG 1**



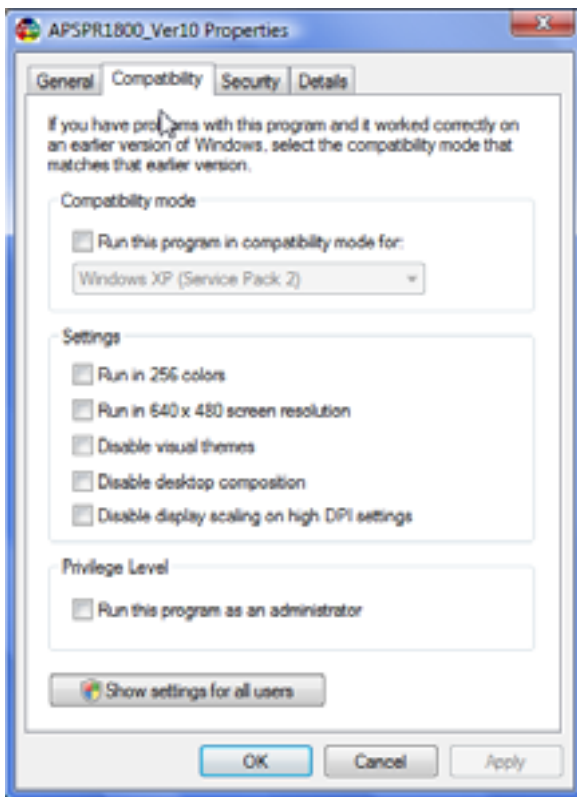
Now click on Properties. (Fig. 2)

Fig. 2



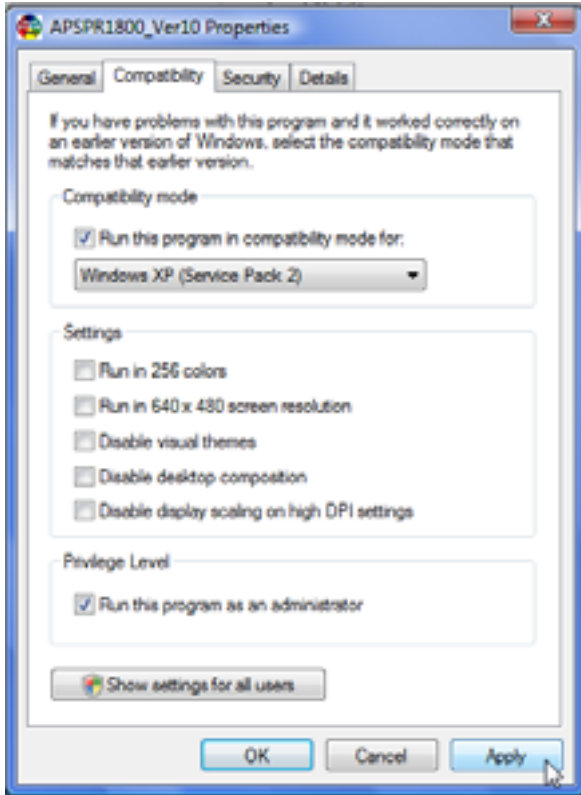
Now click on the Compatibility tab. (Fig. 3)

FIG. 3



Check “Run this program in compatibility mode for:” and select from the drop down list “Windows XP (Service Pack 2)”. Also under Privilege Level check “Run this program as an administrator”. (If this option is grayed out you need to be signed in on a user account that has administrator privileges. If the account you are signed in as does have administrator privileges and this option is grayed out, simply continue.) Click Apply and then OK. (Fig.4)

**Fig. 4**



Now double click the circular multi-colored icon named AP5PR1800\_Ver10.exe to re-launch the EPSON adjustment program and it should function normally.