

### Installing the Printer Driver on Windows Vista

Tech Note Number: 628

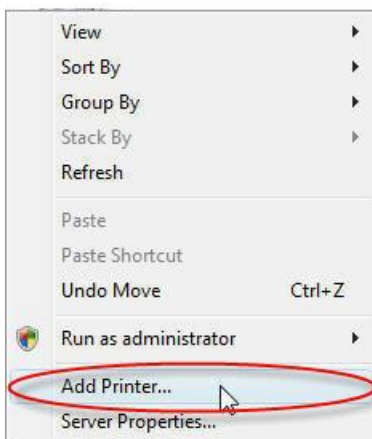
Total number of pages: 5

Date: 11/24/2009

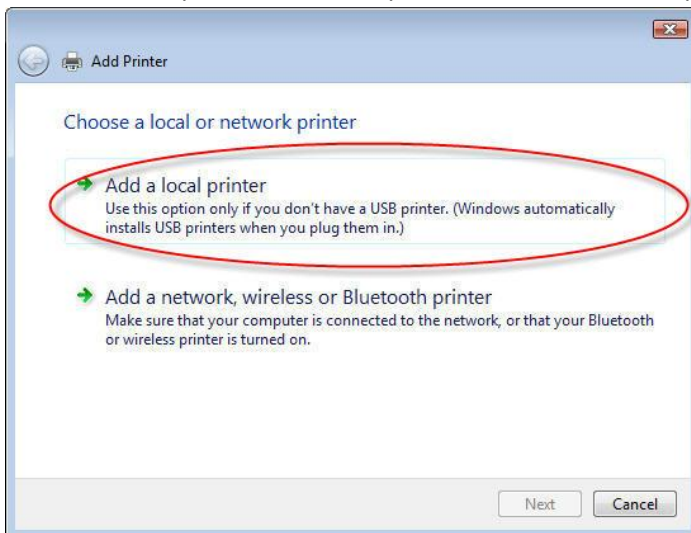
**Applicable Models:** AnaJet FP-125 and *SPRINT* printer series

#### C. Installing New Driver

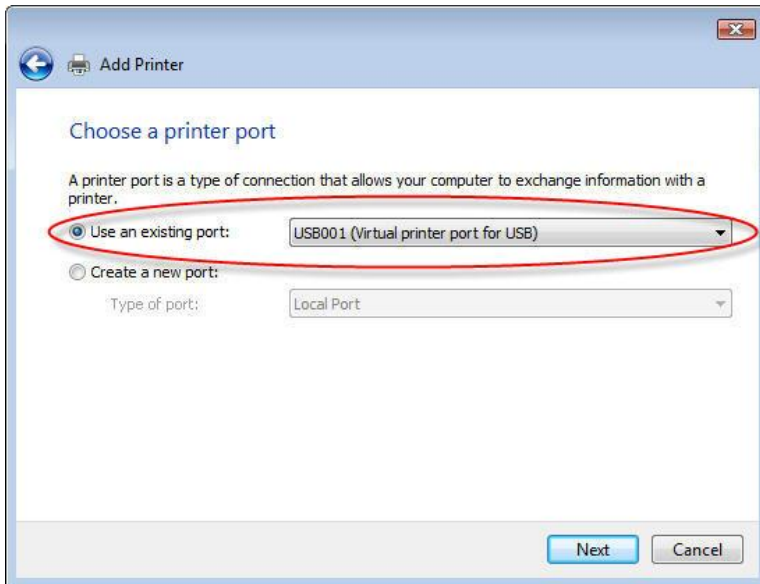
- 1) Right click a blank space in the window and select "Add Printer".



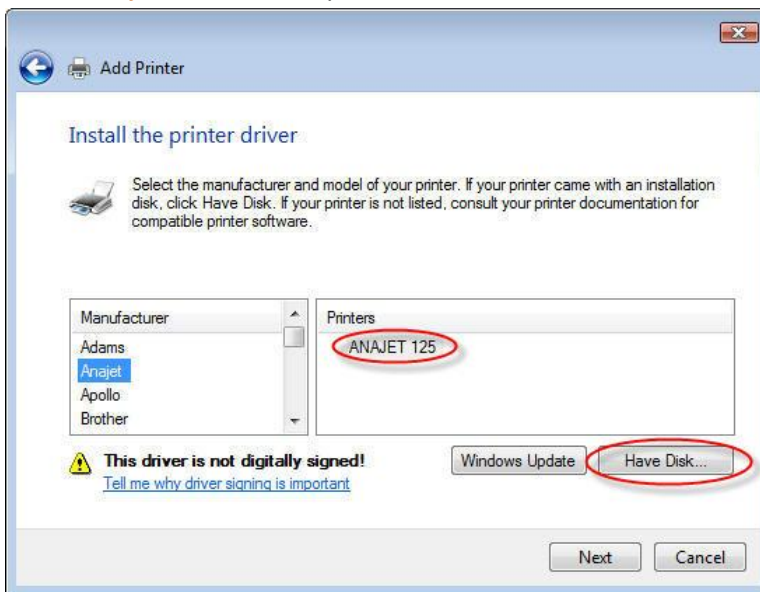
- 2) When the add printer window opens, select "Add a local printer" and click next.



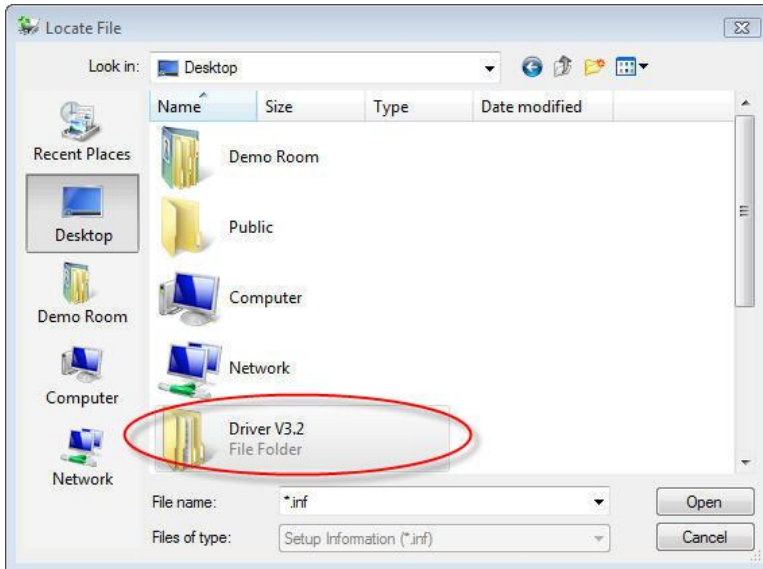
- 3) Click the “Use an existing port” radio button. Select the virtual USB port the AnaJet is connected to from the pull down menu. Select next.



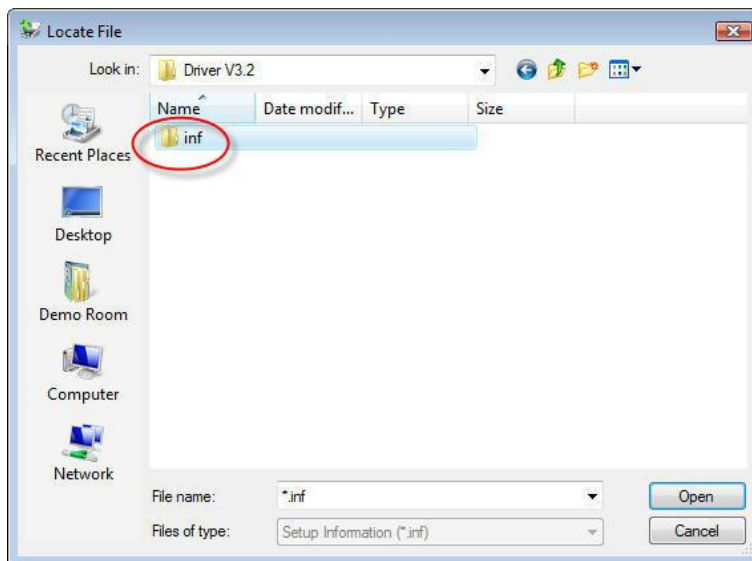
- 4) Select ~~Anajet~~AnaJet as the printer manufacturer. Click the “Have disk” button.



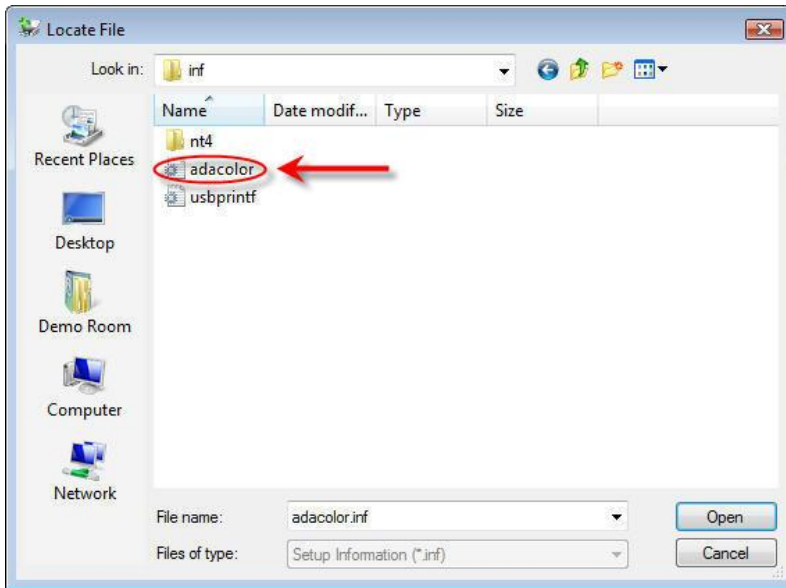
- 5) Browse to the location where you extracted the driver you downloaded from [AnajetAnaJet](#). Click "Open".



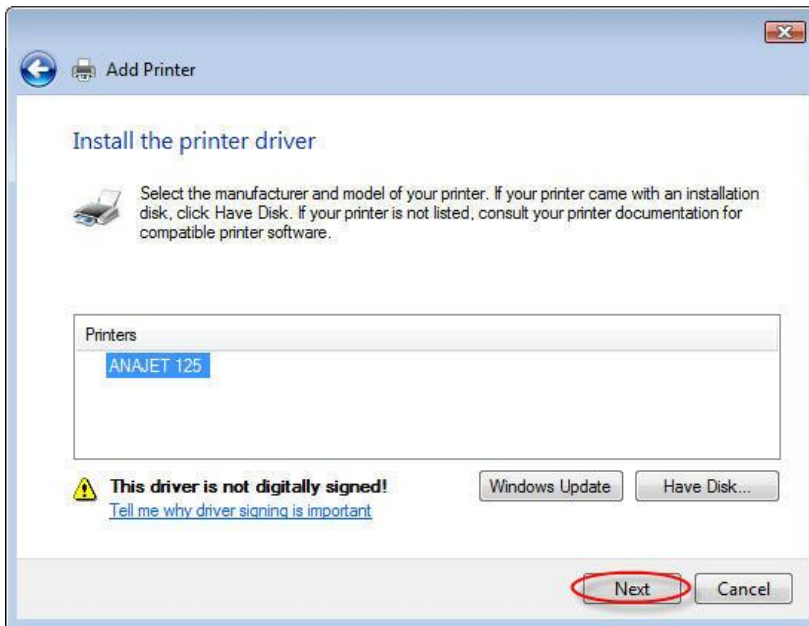
- 6) Double click the INF folder.



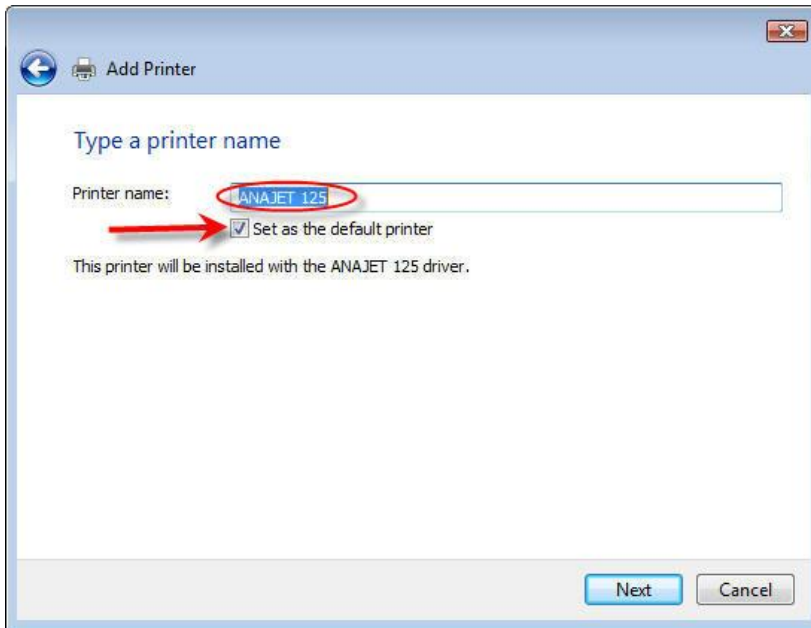
7) Select the “adacolor” file and click open.



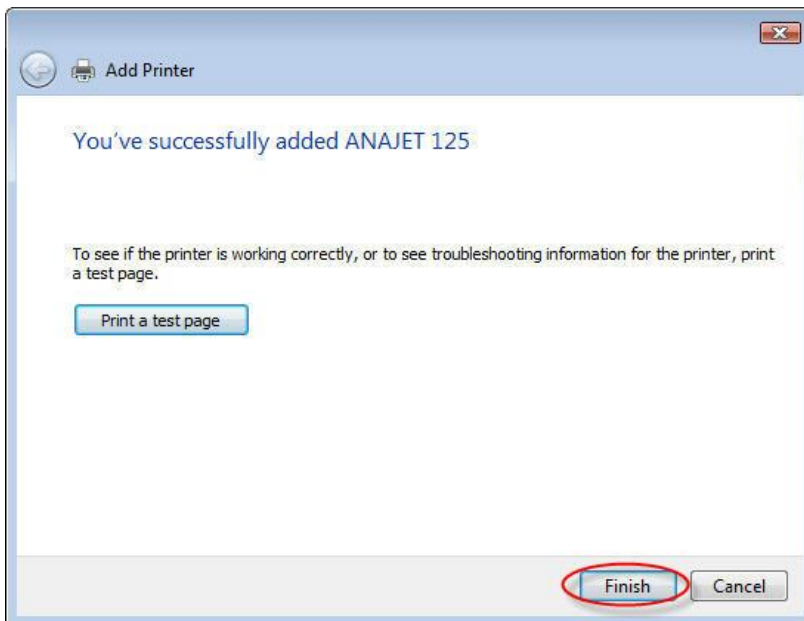
8) Click “Next” on the dialog box.



9) Leave the printer name as is. Click the “Set as default printer” check box.



10) Once the progress bar completes, select finish.



11) Your new AnaJet driver is now installed.