
Maintenance Station Replacement



Technical Support

Version 1.1
February 19, 2014



Contact Info

Corporate Office: **AnaJet Inc.**
3050 Redhill Ave
Costa Mesa, CA 92626
USA

Telephone: **714.668.6000**
Toll Free: **877-6-ANAJET (877.626-2538)**
Fax: **714.662.3600**

Revision History

Revision	Description	Author	Date
1.0	Initial release.	Ray Larason – Technical Support	January 3, 2012
1.1	i-Series update	Robert Herman- Technical Support	February 19, 2014

Replacing the Maintenance Station

Introduction

This is a step by step guide on how to replace the maintenance station assembly.

Scope

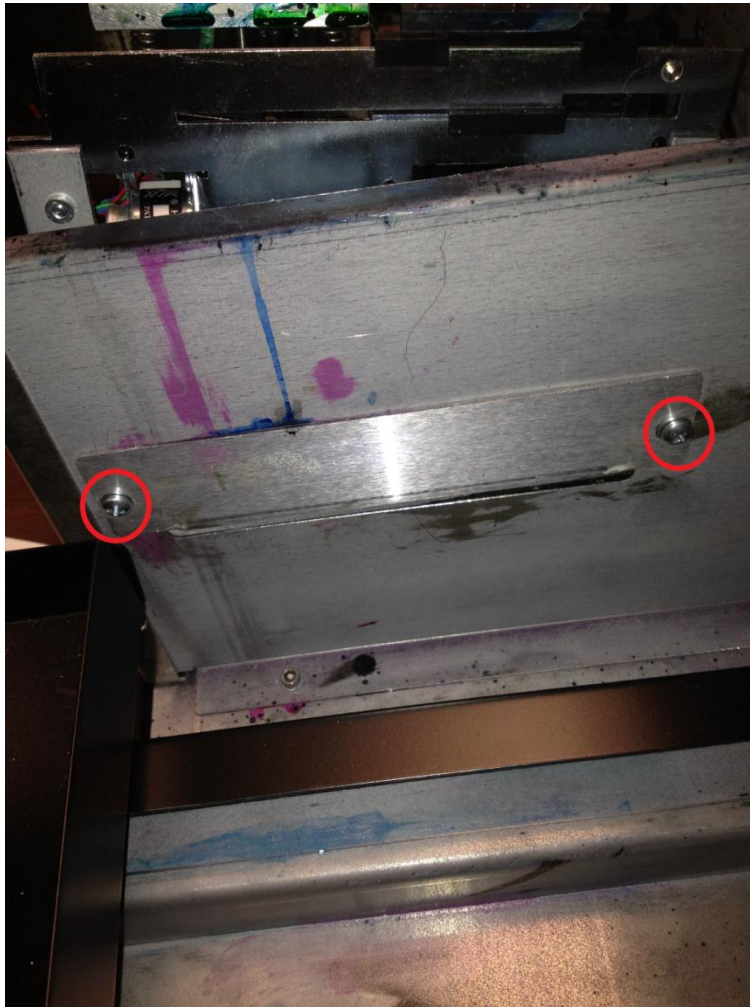
This applies to mPower and mPower i-Series printers only.

Symptoms

Problems with the maintenance station not pulling ink or damaged parts on the maintenance station assembly.

Step 1

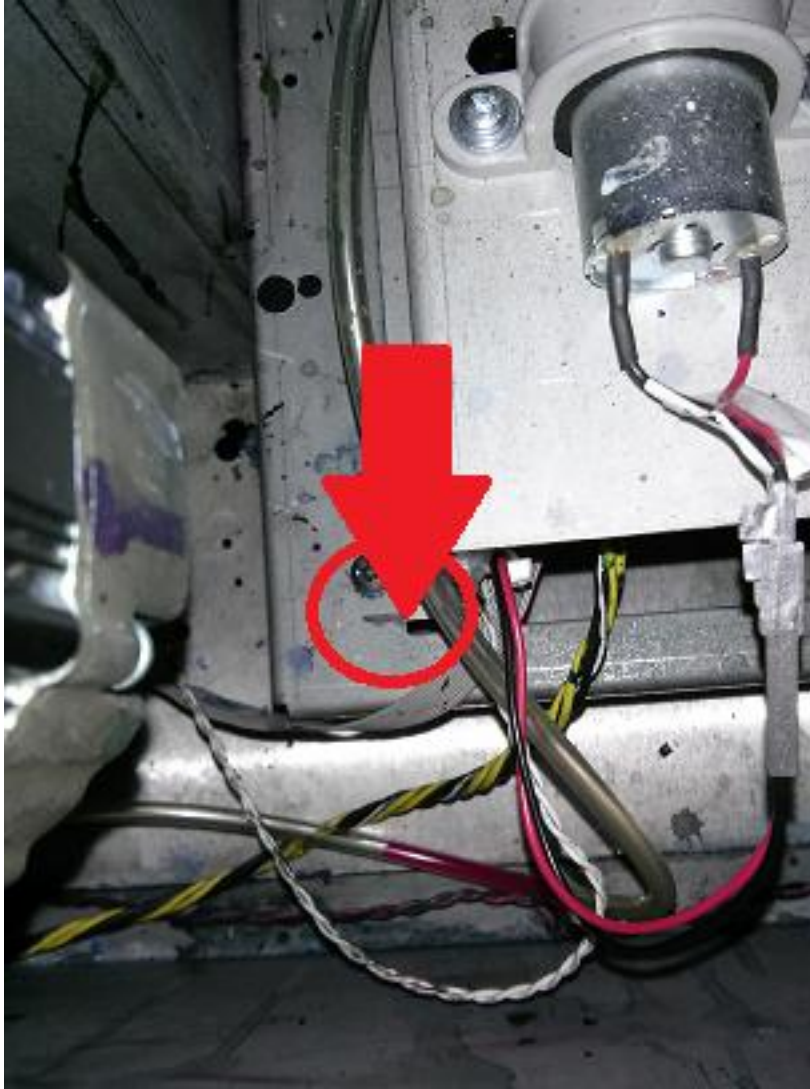
The first thing we want to do is release the print head carriage in the maintenance functions menu. Then power the printer down with the switch on the back. Remove the drip pan located underneath the maintenance station. To do this remove the 2 screws holding it in then pull the tray out of the machine. Please see picture below.



Step 2

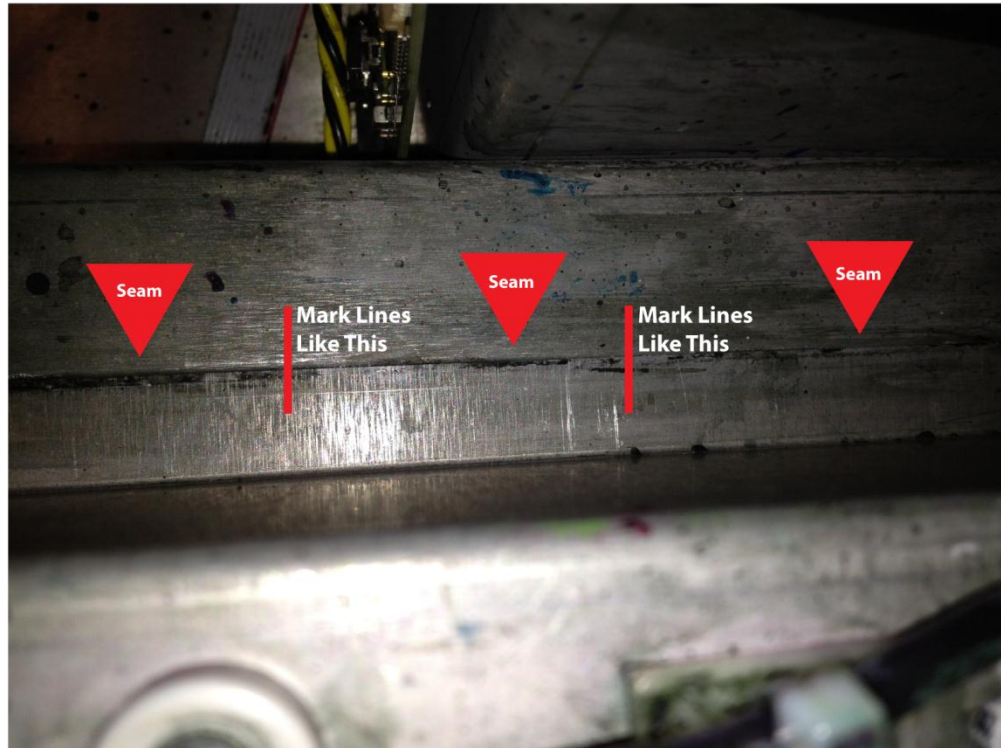
Next, notice where the maintenance station assembly connects to the base it is screwed in to. We want to mark this edge with a sharpie or marker so that we can place the replacement maintenance station in the same exact spot as before.

You want to make vertical lines over this seam, which means there will be a mark on the base and the old maintenance station.



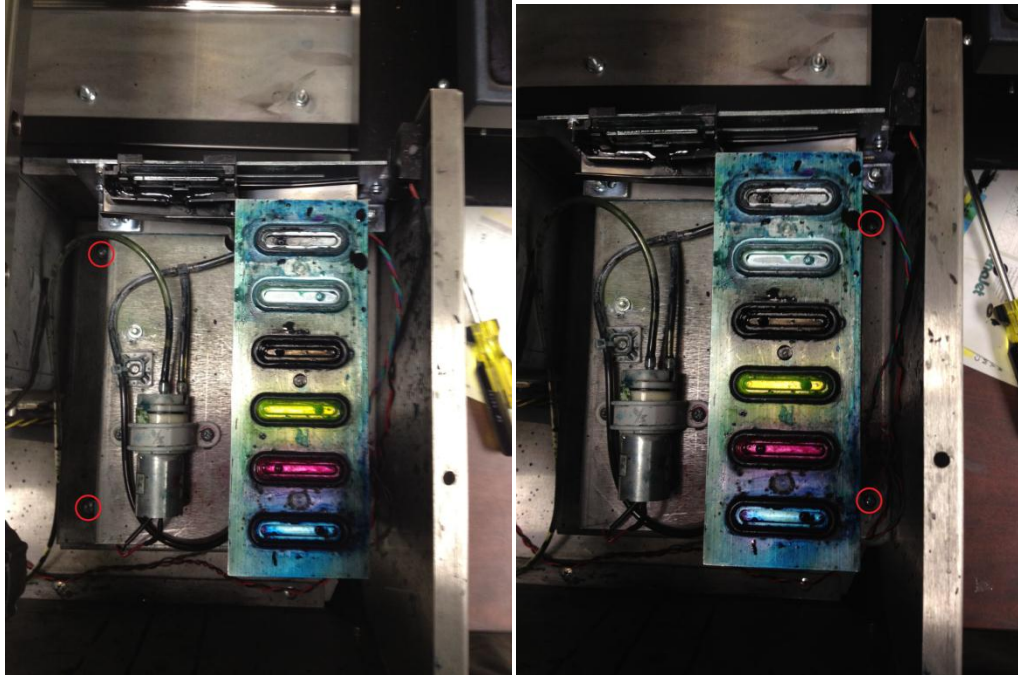
2.1

Once the old maintenance station is removed, measure the position of the marks then use these measurements to draw the same marks in the same position on the new maintenance station.



Step 3

After marking this edge, remove the 4 screws holding the maintenance station assembly to the base. Once the 4 screws are removed, you will be able to lift the maintenance station off the base. See picture below.



Step 4

Once you take the maintenance station off its base, you must remove the 5 wires plugged into the board located underneath the maintenance station. You also want to disconnect the drain tube from the waste ink tank. See images below.



Step 5

Once the old maintenance station is removed, you can now install the new maintenance station. Make sure to align the new maintenance station to the marks you drew in step 2. Once the maintenance station is installed you will need to adjust the Wiper Height. Please see TD&R “Wiper Blade Adjustment” for correct steps to adjust wiper height.