
Needle Assembly Cleaning Guide

AnaJet®

Technical Support

Version 2
9/24/2014



Contact Info

Corporate Office: **AnaJet Inc.**
3050 Redhill Ave
Costa Mesa, CA 92626
USA

Telephone: **714.668.6000**
Toll Free: **877-6-ANAJET (877.626-2538)**
Fax: **714.662.3600**

Revision History

Revision	Description	Author	Date
1.0	Initial release.	Eric Wilson – Tech support	10/11/2012
2.0	Revised for REV C.	Juan Becerra – Tech support Robert Herman – Tech Support	9/24/2014

Needle Assembly Cleaning Guide

Introduction

This guide will show you how to clean a needle valve assembly.

Scope

This applies to mPower printers only.

Symptoms

- Poor Nozzle Check
- Dampers have trouble filling
- White Ink Separation

WARNING:

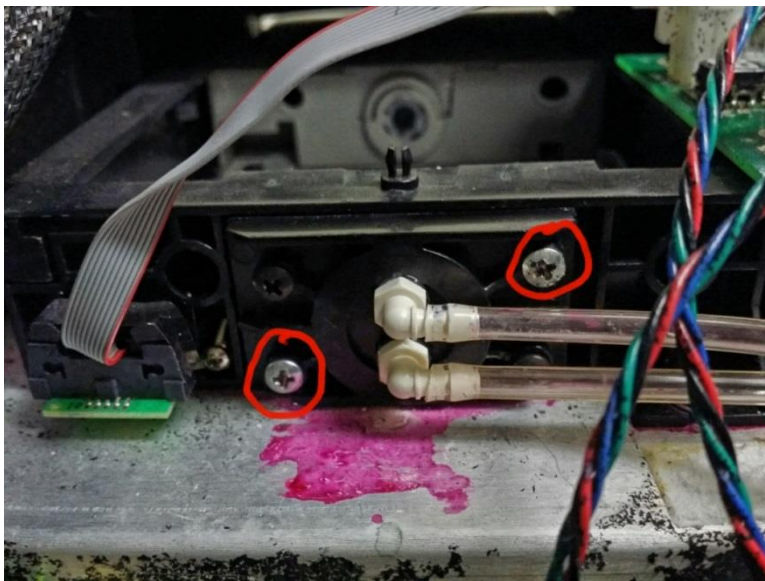
MAKE SURE TO TAKE NOTE OF HOW THE NEEDLE ASSEMBLY IS PUT TOGETHER BEFORE YOU TAKE IT APART AS YOU CAN PUT IT BACK TOGETHER THE WRONG WAY.

ALSO, MAKE SURE TO TAKE NOTE OF WHICH TUBES GO WHERE ON THE NEEDLE ASSEMBLY BEFORE REMOVING THEM.

Step 1

Remove the two silver screws

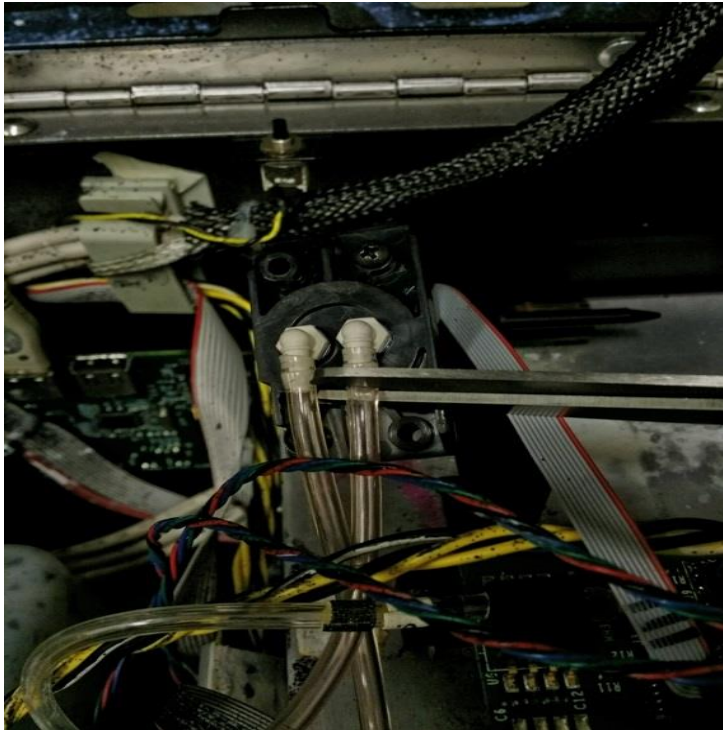
The silver screws are the only screws you will need to remove.



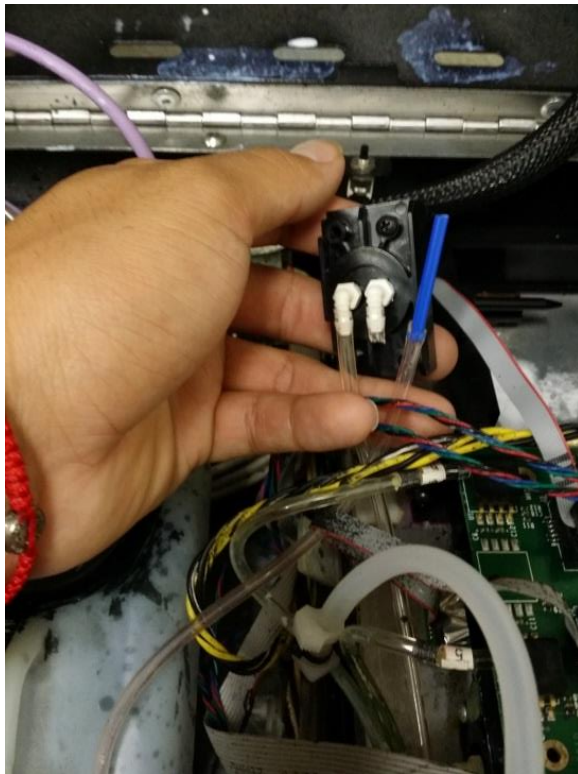
Once you have removed the two silver screws you will have better access to remove the tubes from the elbows.

Step 2

With the needle assembly fully accessible, you can cut the tubes off of the elbows.



Cut one tube at a time, pinch it with hemostats. If you do not have hemostats, plug it with the blue handle swab (sent with the maintenance supplies) the blue handle fits perfectly in the tube, which will keep ink from leaking and air from getting in.



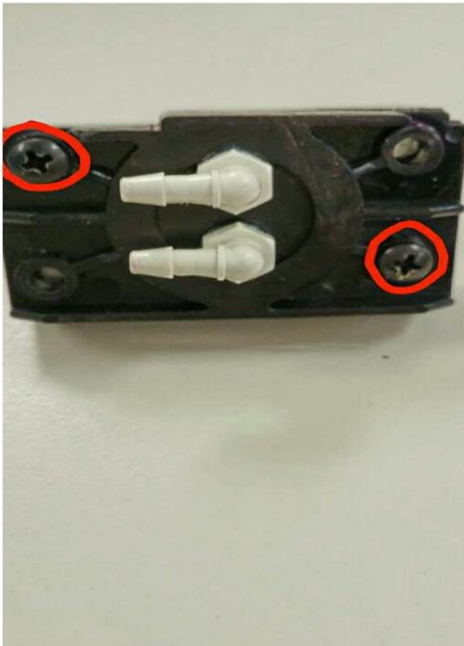
Step 3

With the tubes cut and the needle assembly removed. You will need to remove the excess tube from the elbows. We recommend an x-acto knife as shown in the picture below. If you do not have an x-acto knife you can try to pry the tube off the elbow.



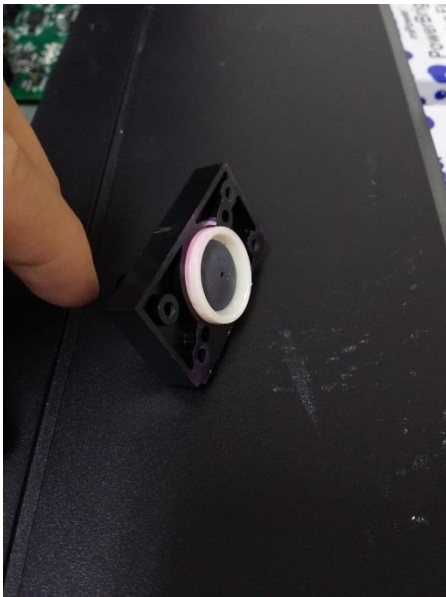
Step 4

Remove the two black screws that hold the needle assembly together. There are two nuts located on the back of the needle. Remove them after taking out the screws. Be sure not to lose the nuts on the back of the needle assembly.



Step 5

The needle assembly is formed by three pieces that easily separate. Take each of these pieces and rinse them under warm water until you no longer see any ink in or on the needle assembly



Step 6

Once the parts are dried and cleaned, reassemble the needle assembly (following the instructions in reverse order) and reinstall in the printer. Once installed perform a 20 second purge fill followed by a 20 second print line fill. Then a clean all heavy followed by clean all light. If the nozzle check is 90% or better for the whites, start printing. If the nozzle check is less than 90%, perform two white head cleans back-to-back.

